

## Neilson Spearhead Preserve Resident Caretaker Position



The Mississippi Headwaters Audubon Society (MHAS) is seeking a Resident Caretaker at the Neilson Spearhead Preserve (NSP), 48851 County 29, Bemidji, MN 56601. [www.spearheadmhas.org](http://www.spearheadmhas.org)

Are you passionate about nature and conservation? Do you want to help care for a place where people of all ages can come to develop a sense of wonder and joy for nature and the importance of wild places? MHAS is seeking a dedicated, responsible Resident Caretaker to live on-site at our Neilson Spearhead Preserve and help us protect and maintain the beauty and facilities of this unique nature area, completely surrounding Spearhead Lake – just 11 miles southwest of Bemidji.

### As the Resident Caretaker, you'll play a vital role in:

- ✓ Building and grounds maintenance at the preserve.
- ✓ Site monitoring and security
- ✓ Monitoring wildlife and ensuring the health of the ecosystem.
- ✓ Welcoming and assisting visitors (if applicable).
- ✓ Responding to emergencies and reporting any concerns.

### What we're looking for:

- ◆ Strong work ethic and self-motivation.
- ◆ Basic maintenance skills (household repairs, grounds work, equipment upkeep, etc.).
- ◆ Ability to work independently and responsibly.
- ◆ A deep appreciation for nature and wildlife conservation.

### Residence

Imagine living somewhere surrounded by natural beauty and ample opportunities to hike, snowshoe, or canoe right out your front door! The residence at Neilson Spearhead Preserve is a 1040 sq ft, 2 bedroom earthen home completed in 1981. The building was constructed as an example of environmentally-friendly, innovative design with concrete walls and roof embedded into a hillside and covered with sod. It was designed and built almost entirely by MHAS volunteers. The residence was completely updated in 2018 with new flooring, appliances, energy efficient heating system, and more. It also has a Jotul wood stove, large outdoor deck, garage, and path leading right down to Spearhead Lake. Couples or a small family are welcome.



## Neilson Spearhead Preserve Resident Caretaker Position



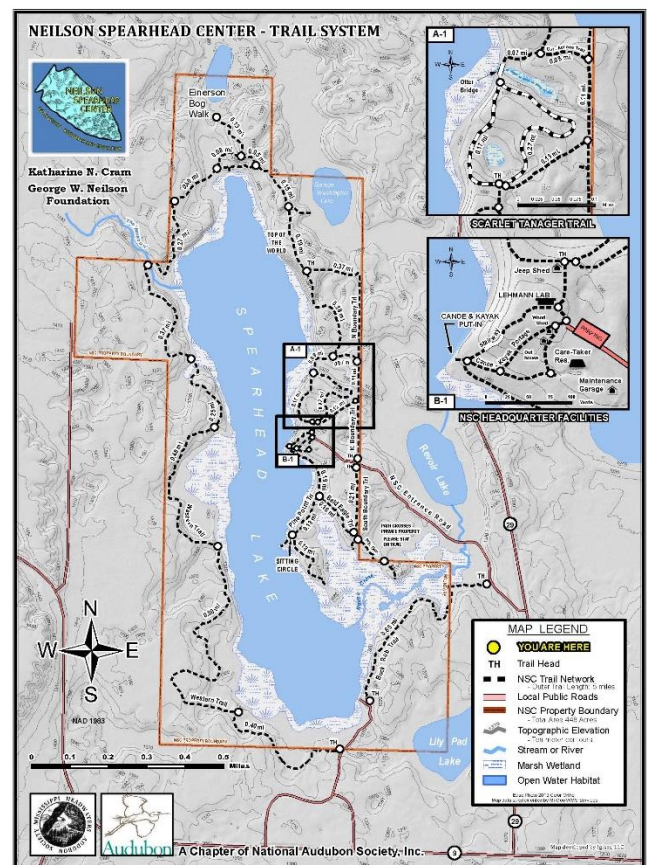
This is a part-time, permanent position averaging 4-8 hours per week. Residency is a condition of employment. Compensation for caretaker services is in the form reduced rent, valued at \$400/month. Rent due would be \$800/month. Utilities are not included (average cost approximately \$120/month).

### Who We Are

The Mississippi Headwaters Audubon Society is one of Bemidji's most enduring environmental conservation organizations. We were founded through the efforts of concerned local citizens who saw the need for a strong environmental voice in the early 1970's. The majority of our activities are environmental education and outreach. Our mission is **"to foster personal connections to and stewardship of our natural world."**

### What We Do

- Manage a 466 acre preserve called the Neilson Spearhead Center
- Host a nature camp called "The Young Naturalist Program" each summer where kids get a hands-on nature experience!
- Lead community projects and events that connect people with nature
- Advocate for local conservation of important habitats and ecosystems
- Provide opportunities for nature-inspired study and research



 Interested? Email your resume and a brief cover letter to [mhaspres@spearheadmhas.org](mailto:mhaspres@spearheadmhas.org),